

2cm stone mass

tile installation options

Content

- Tile dimensions and layout options
- How to choose the right installation method
- Installation of stoneware tiles only on adjustable supports
- Use of angle controllers
- Rubber gaskets under and on supports
- Aluminium system for stone tiles
- Terrace of unadhesive stone tiles on a frame
- Using 2 cm tiles in a well

These tiles are 2 cm thick. The colours range from grey to black and from grey-brown to beige. There is also a silver-cream range, perfect for creating classic and elegant surfaces. Can be used outdoors in public and private spaces. Ideal for terraces, courtyard paths, alleyways or bays. For indoor use, it is the perfect solution for making raised floors.



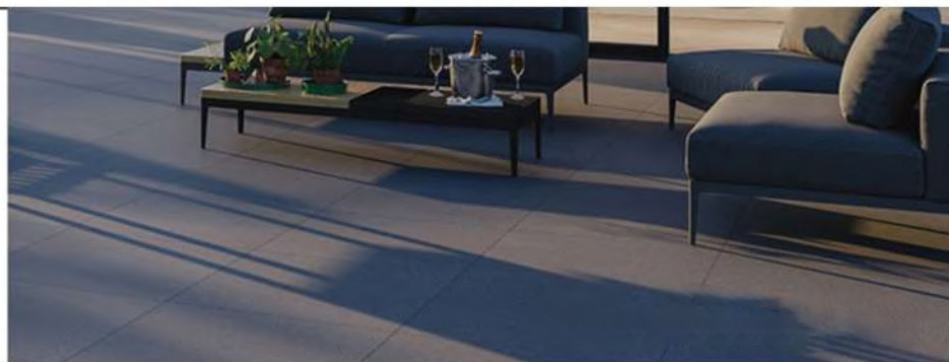
60 x 120 x 2 cm

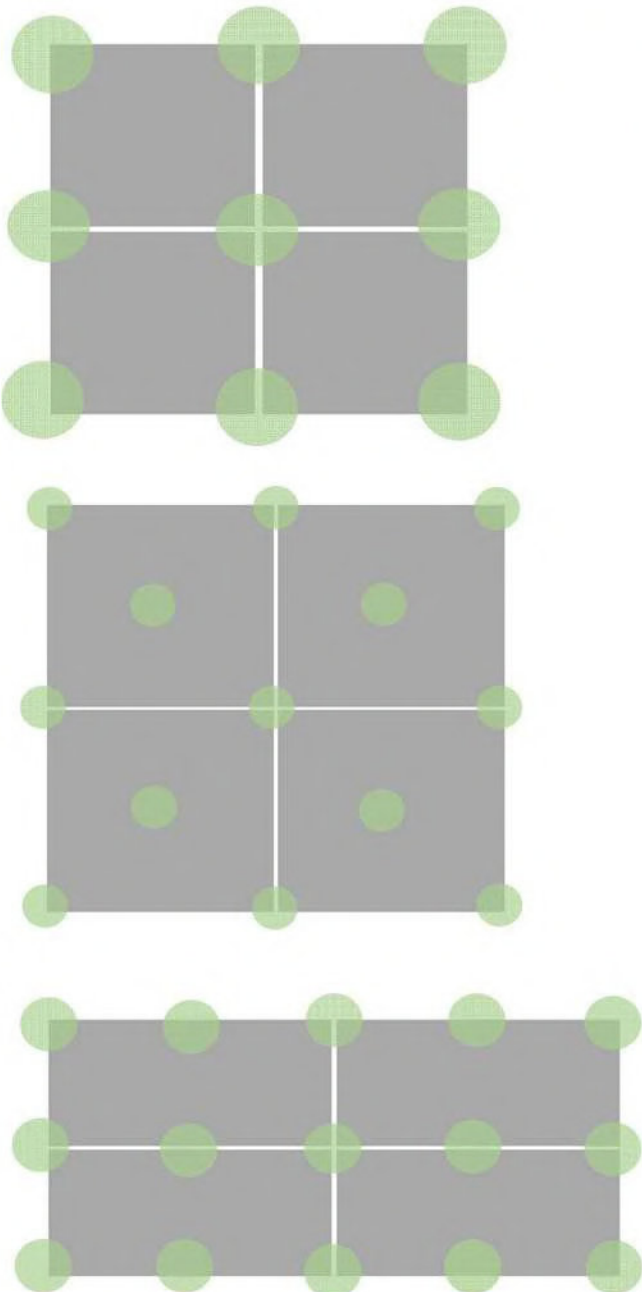


60 x 60 x 2 cm



75 x 75 x 2 cm





Tile format

40x40, 45x45, 50x50, 60x60

The distances between the adjustable supports depend on the dimensions of the tiles chosen and the manufacturer's requirements

Tile format

75x75, 80x80, 90x90, 100x100

Large photomask tiles must be supported over the centre of the tile.

Tile format

30x75, 30x120, 40x120, 60x120

1. Installation on non-adjustable supports



This installation method is used when the distance between the existing floor covering is very small, the height between the tile and the subfloor is 2.8 cm

2. Mounting on adjustable supports



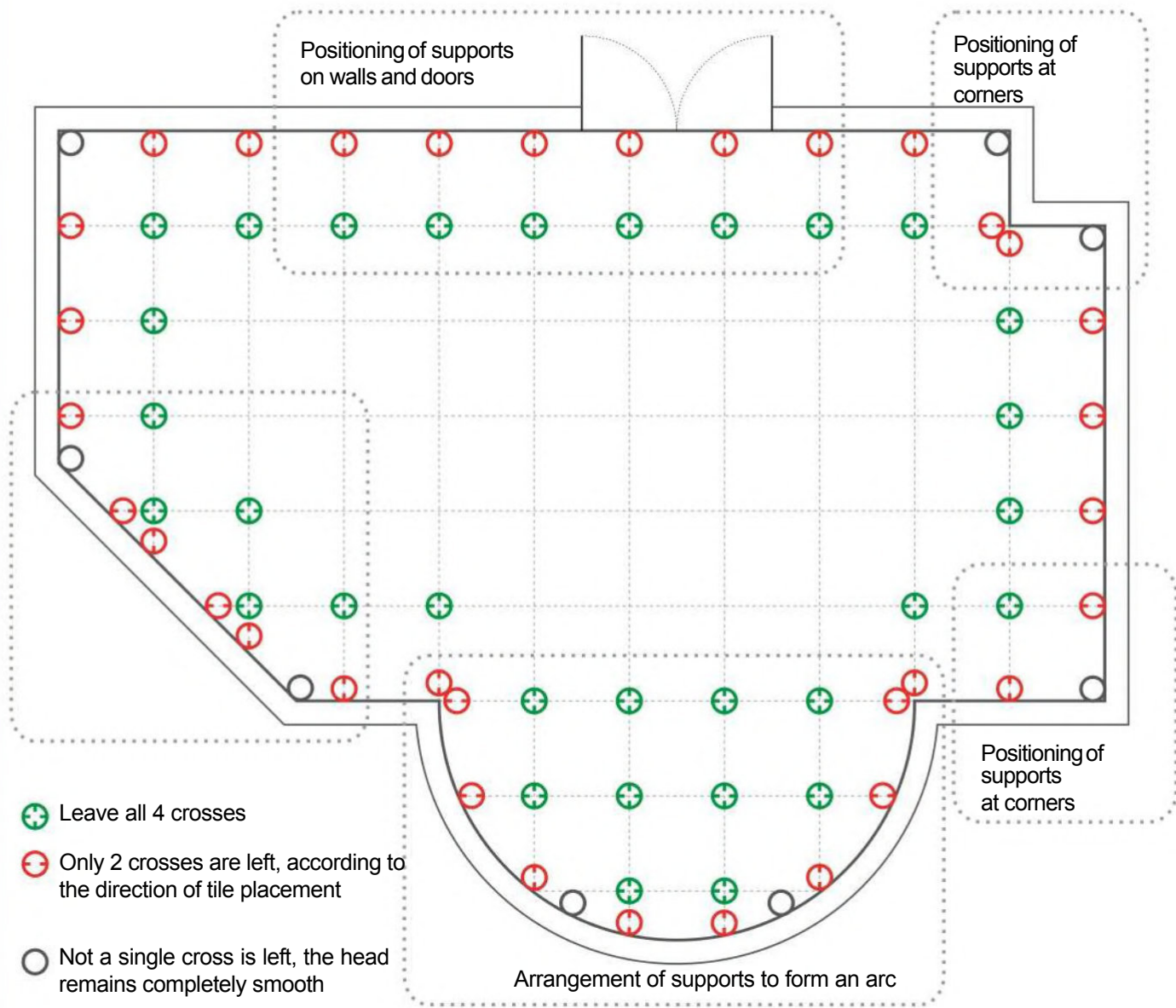
A commonly used installation method with a stable base under an adjustable support. If the surface is not very smooth (with a high slope), slope adjusters are used

3. Mounting on aluminium framing



Aluminium systems are used in public buildings with high loads or on less robust surfaces to stabilise the corners of the tiles in one plane in the event of movement.

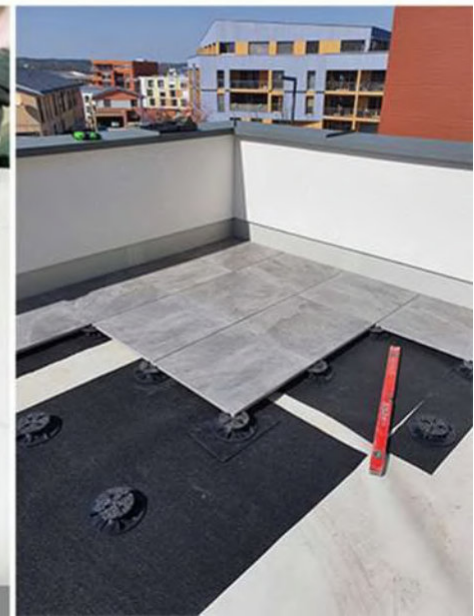
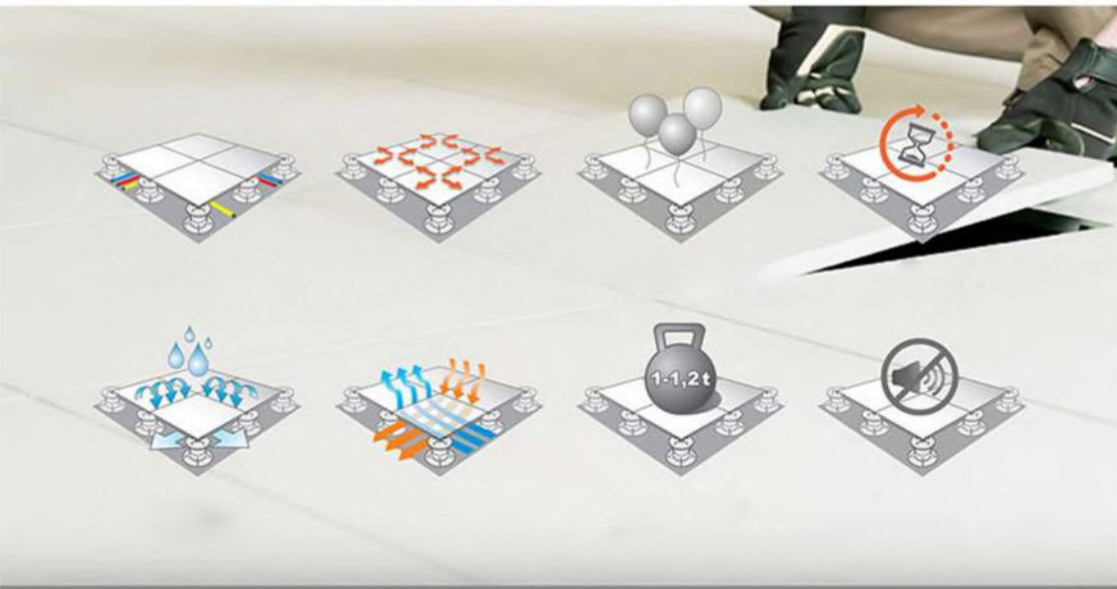
Installation of stoneware tiles on adjustable supports

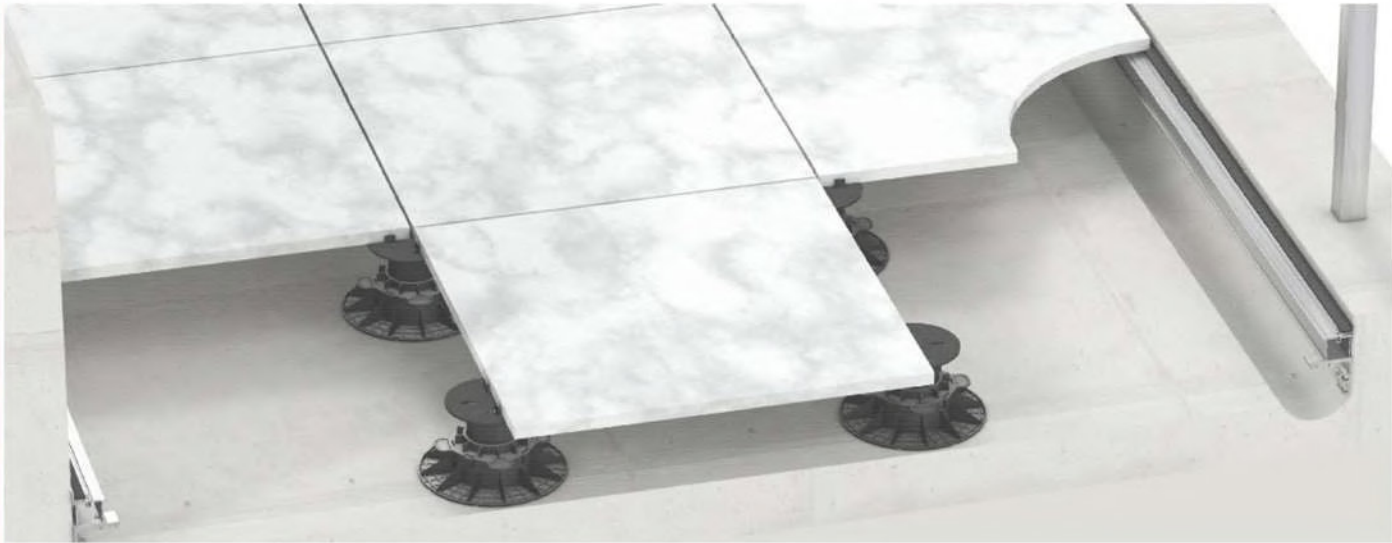
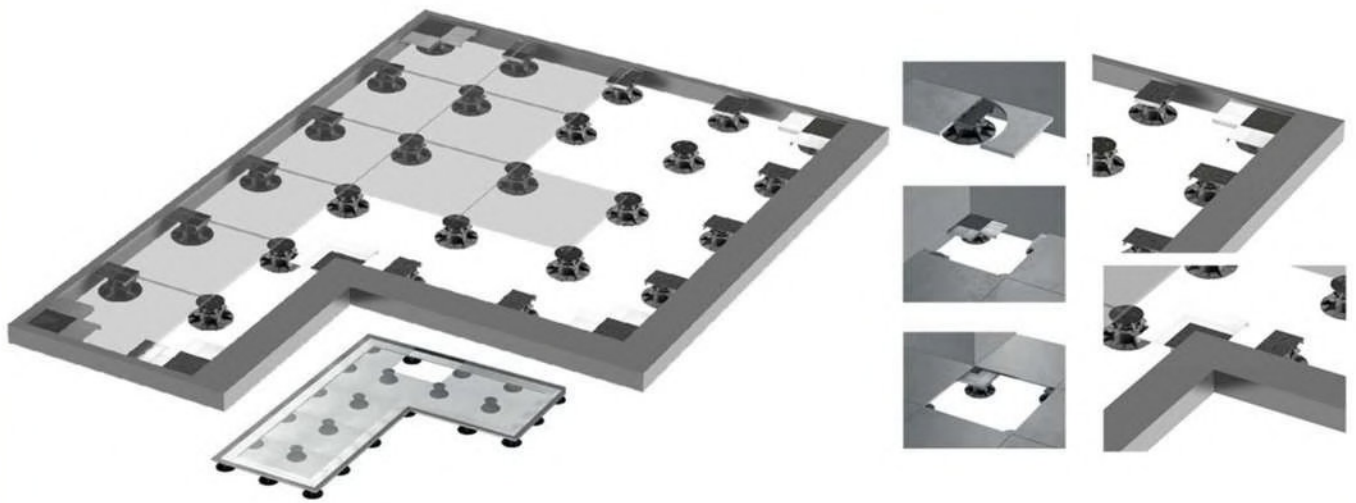


⊕ Adjustable support not modifiable

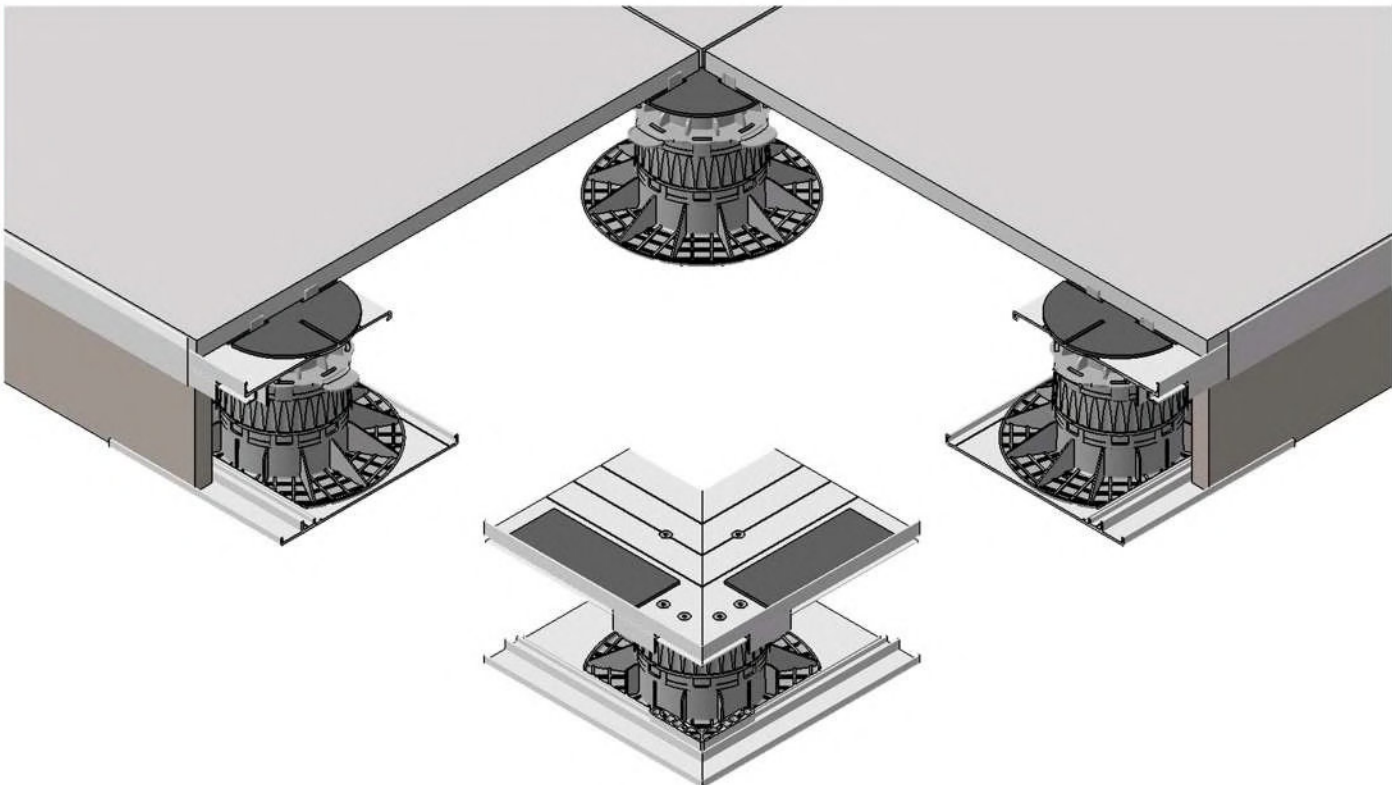
⊖ Break opposite direction crosses

○ Break all crosses

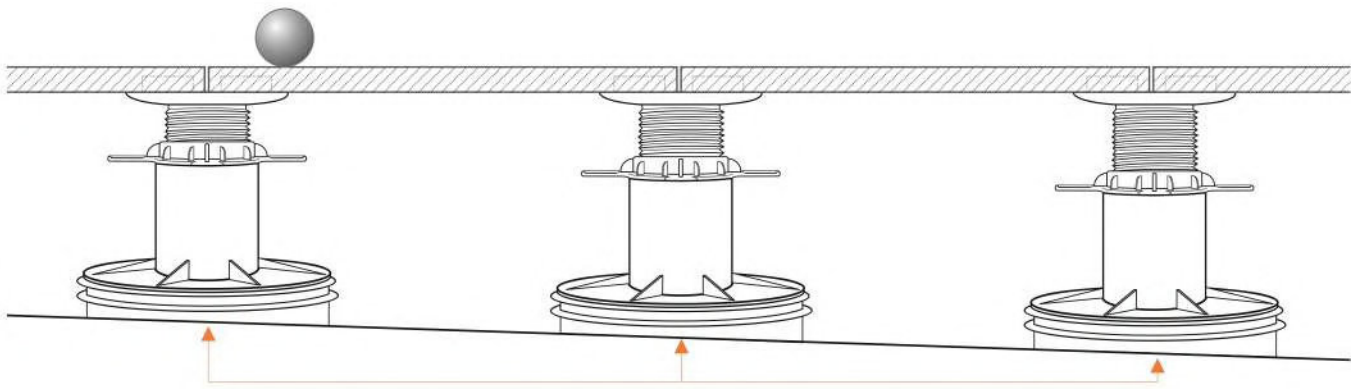




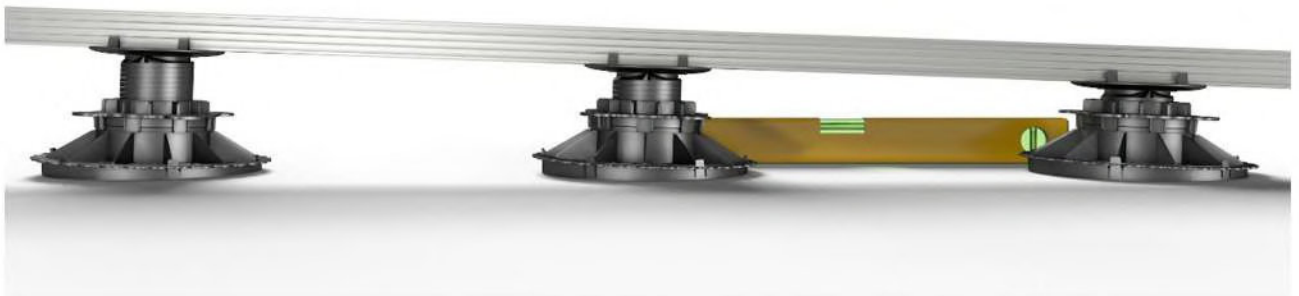
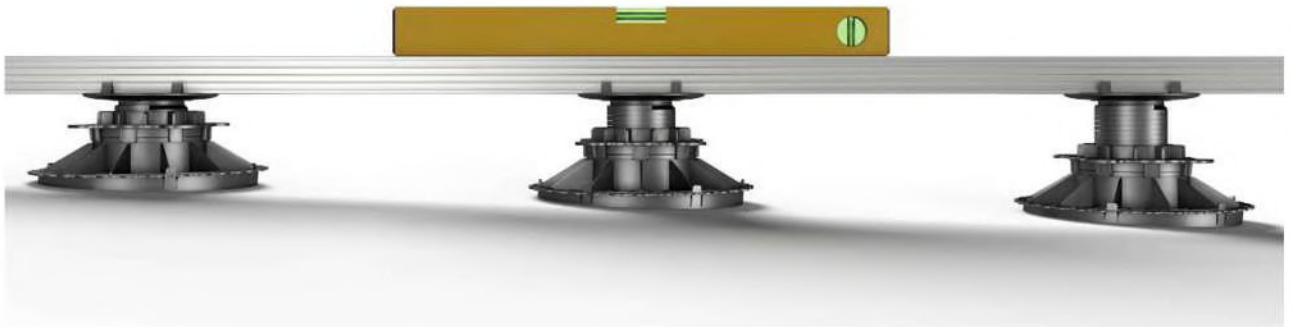
Aluminium corners and other fittings for fixing tiles to corners, or for closing sides.



The height-adjustable terrace supports are made of plastic. The pedestals make it possible to level the terrace frame very quickly and efficiently on uneven surfaces. Ideal for use on unlevelled old ground, uneven terrain, bituminous roofing, paving stones and other uneven surfaces.



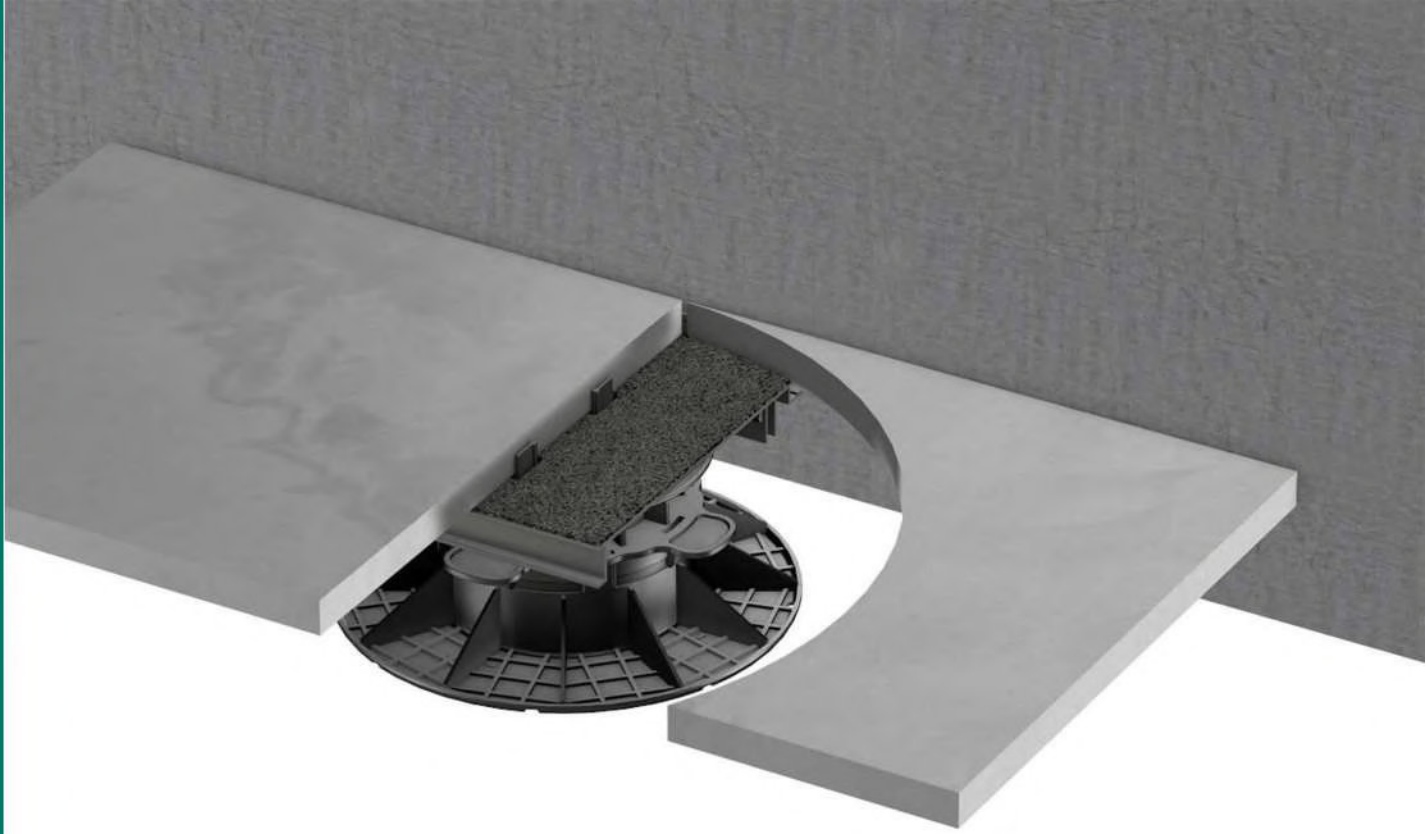
Slope (kapmo) adjuster 1-7% placed directly on the pavement



Slope (kapmo) adjuster 1-7%, by turning two different rings the slope angle is formed and the adjustable support (pedestal) is placed on the levelled sole.



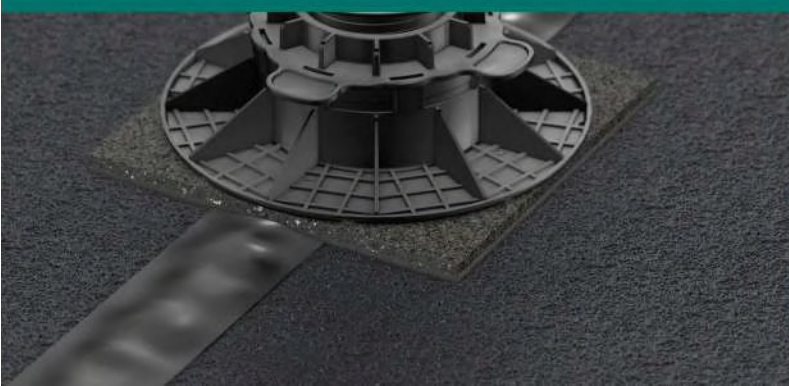
Rubber gaskets under and on supports



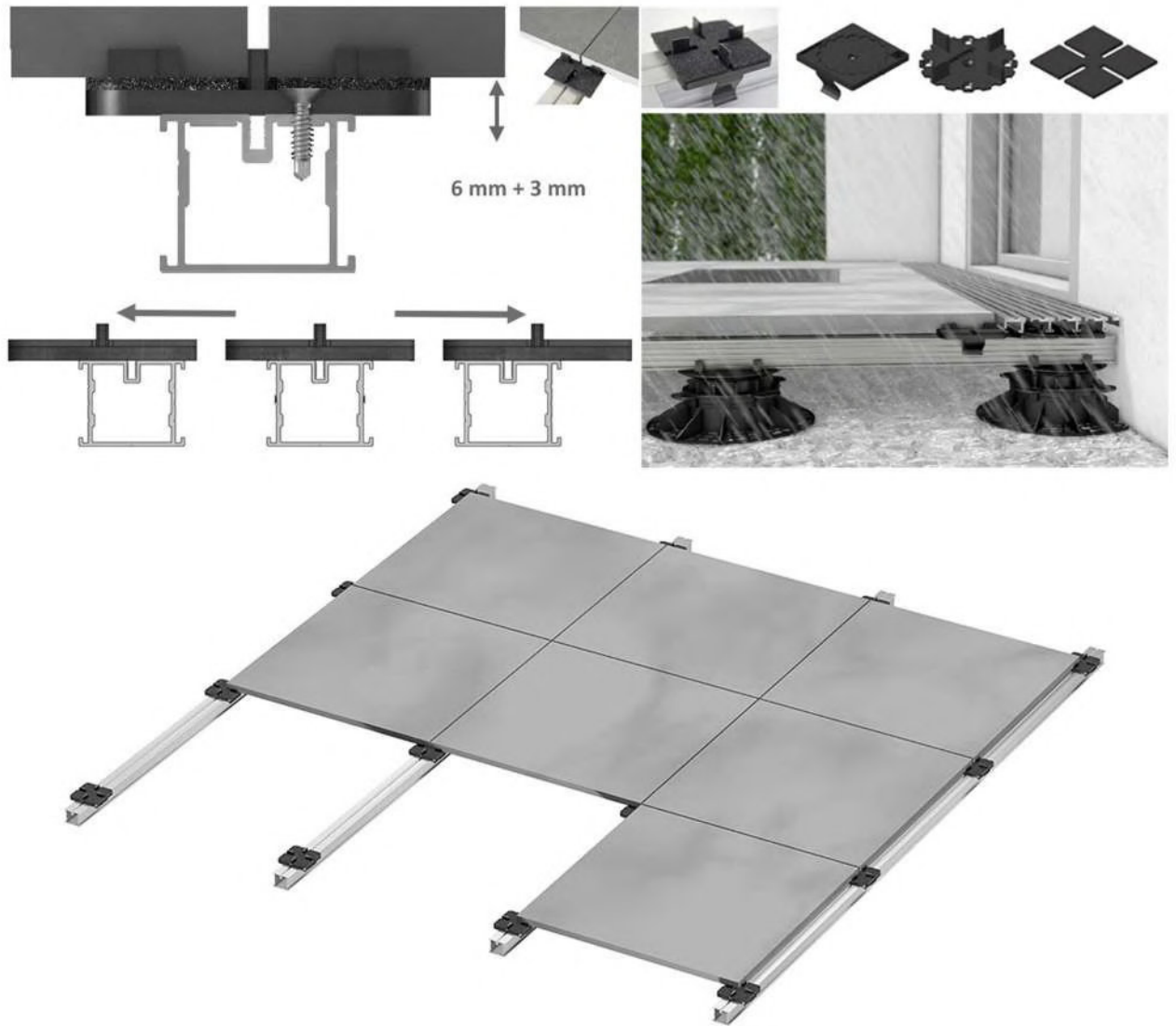
We recommend using rubber soles between the adjustable supports and different surfaces: concrete, cobbles, crushed stone, etc.



The rubber sole (gasket) is used to prevent the sound of friction!

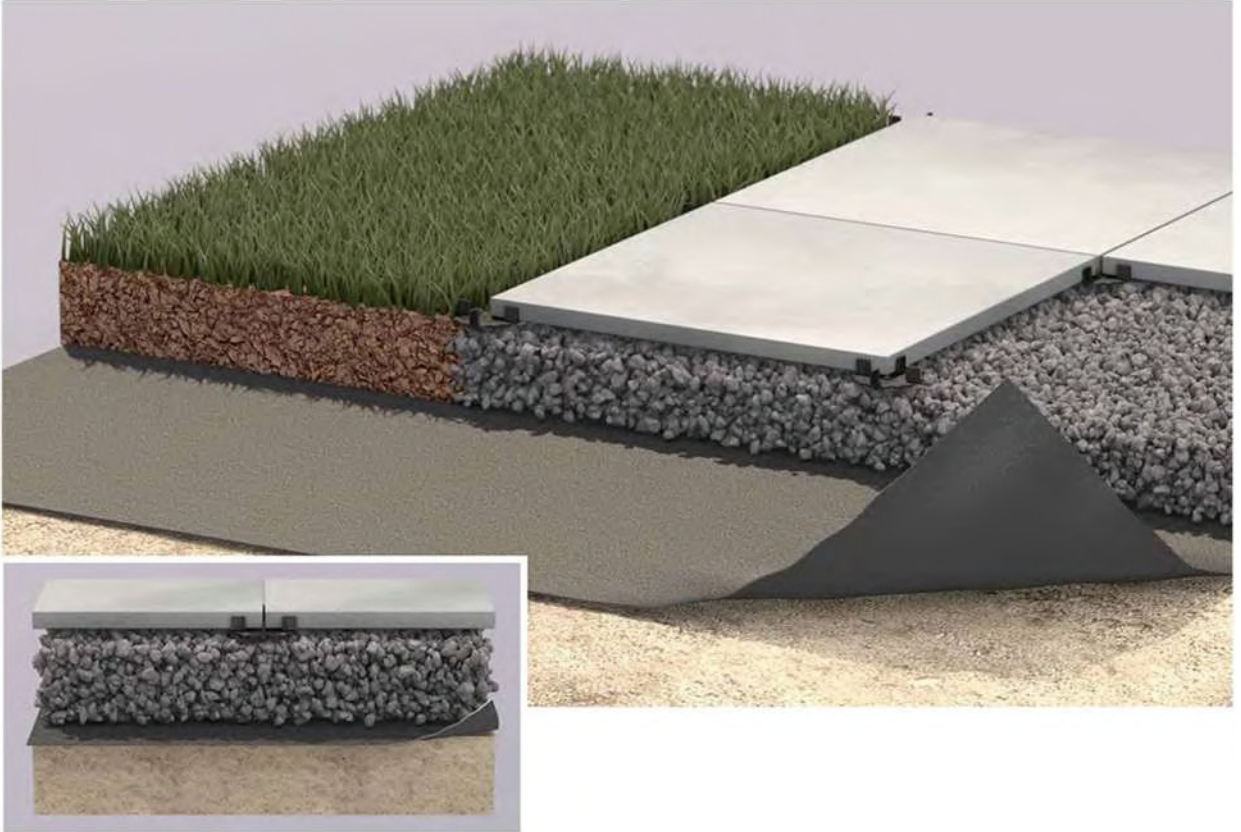


Aluminium system for stone tiles



Aluminium framing for tiles is used to compensate for curved terrain and height differences. This is usually the case on terraces on the ground. The base is compacted and a geotextile is laid. Adjustable supports are selected according to the required height and the aluminium is crossed on top of them in two layers, one on top of the other, to form a double frame.





Sand , crushed stone , gravel can be used for levelling the sub-base. It is a good idea to use geotextiles underneath the levelling layer. The tiles can be placed at intervals or can be shaped as a solid base, in which case plastic crosses should be placed in the gaps to prevent the tiles from touching.

